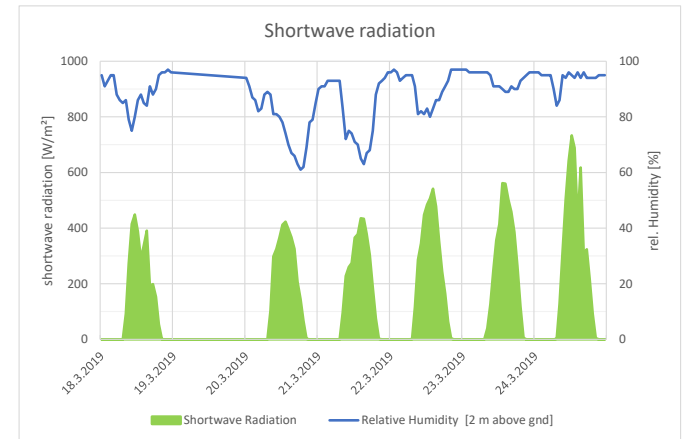
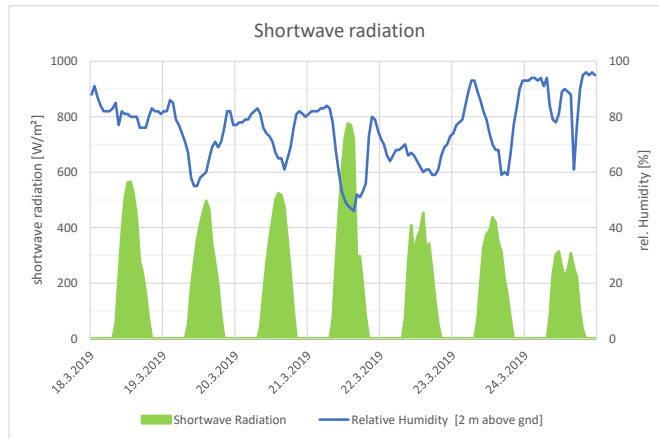
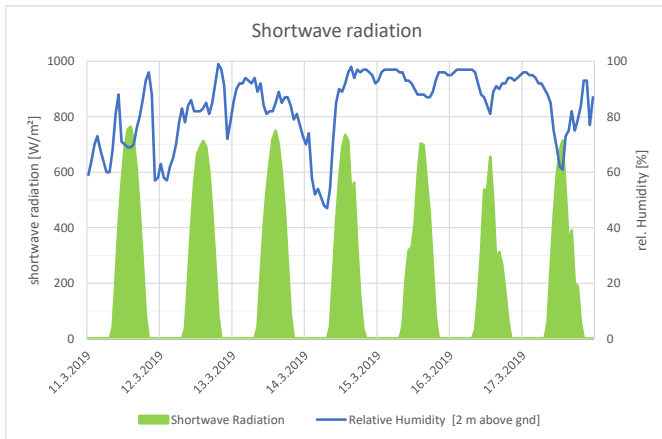
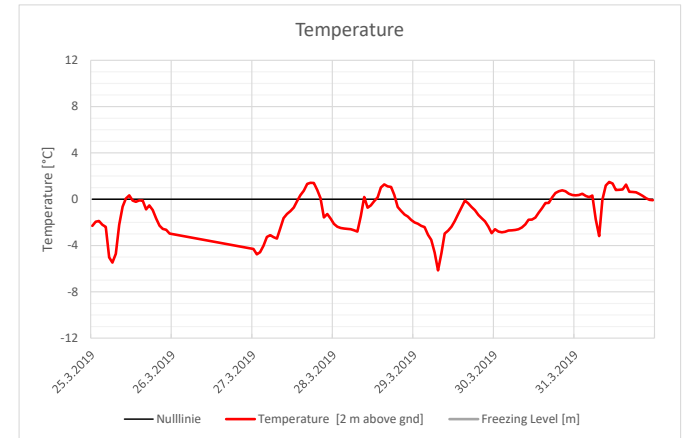
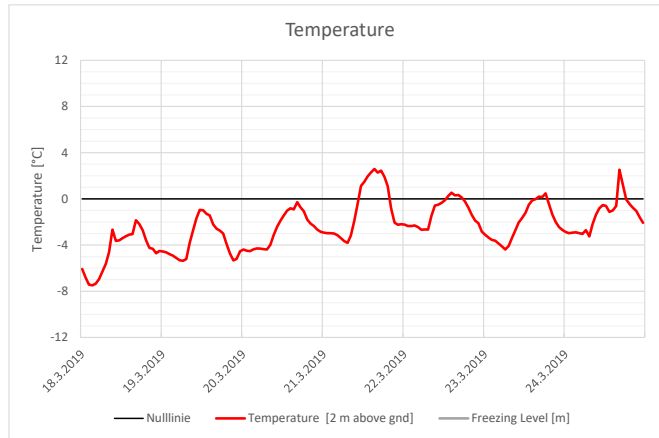
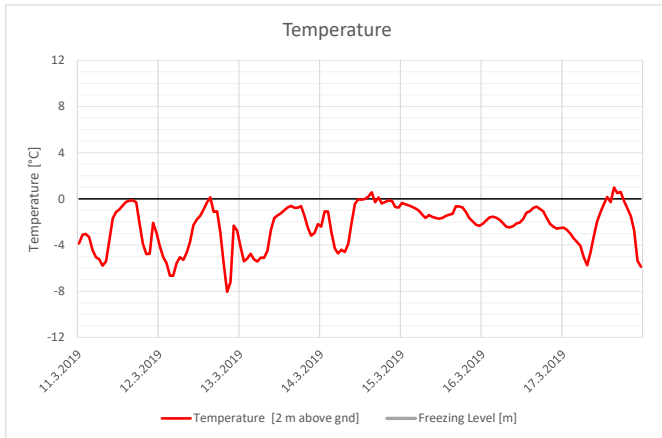
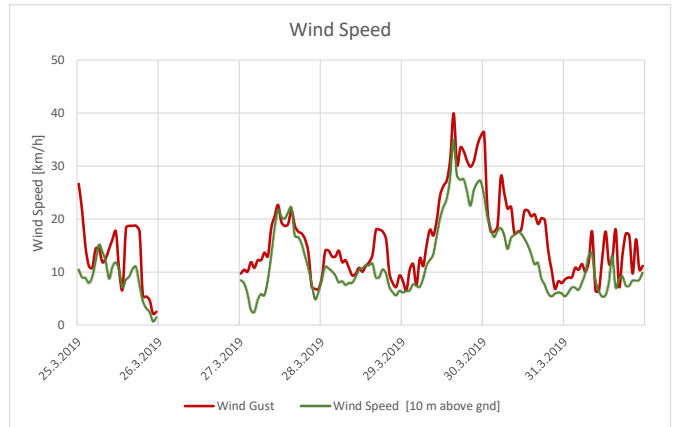
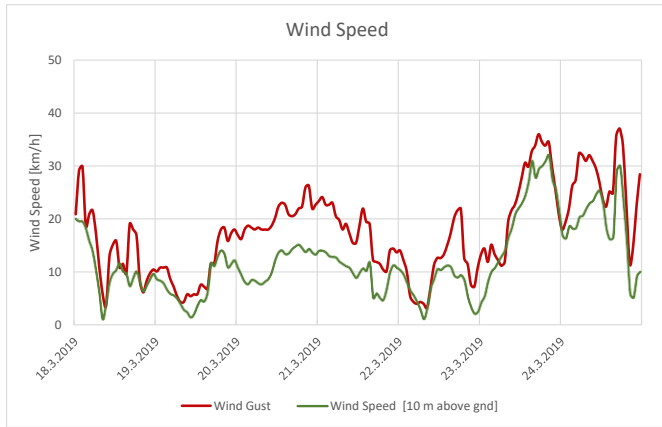
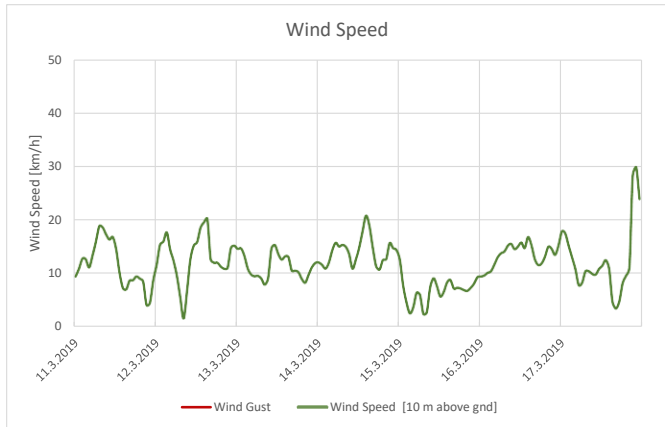
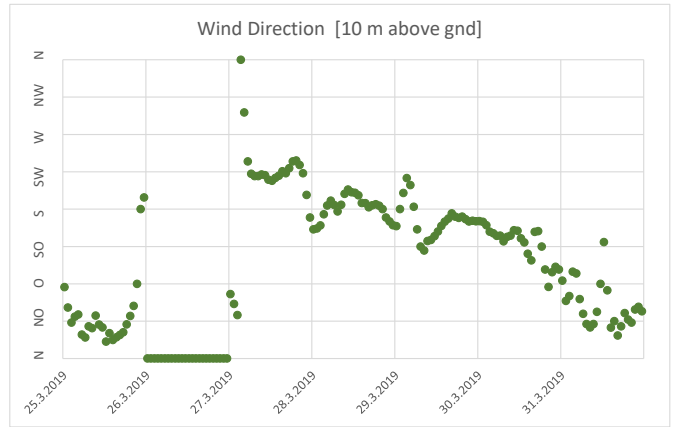
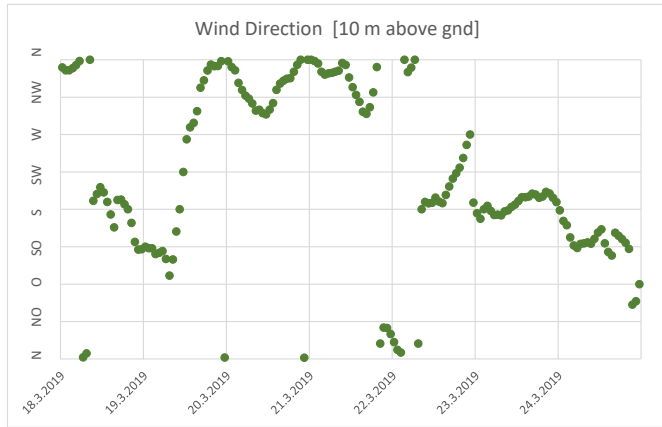
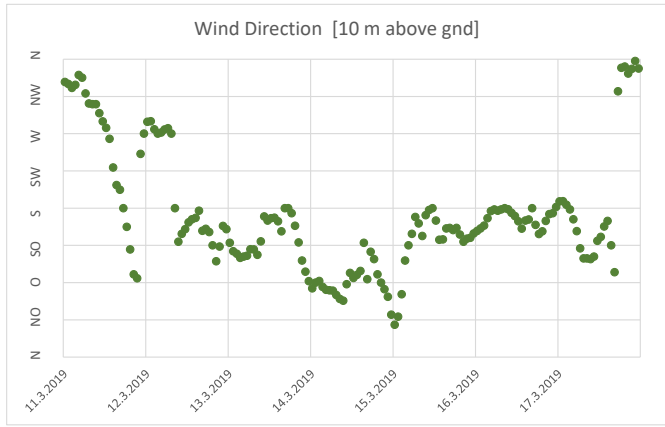
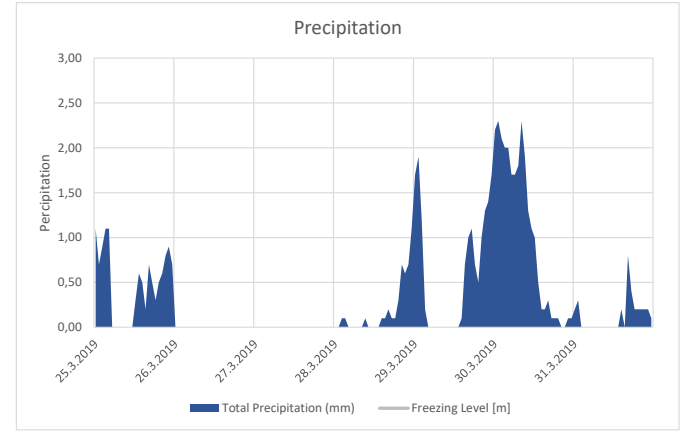
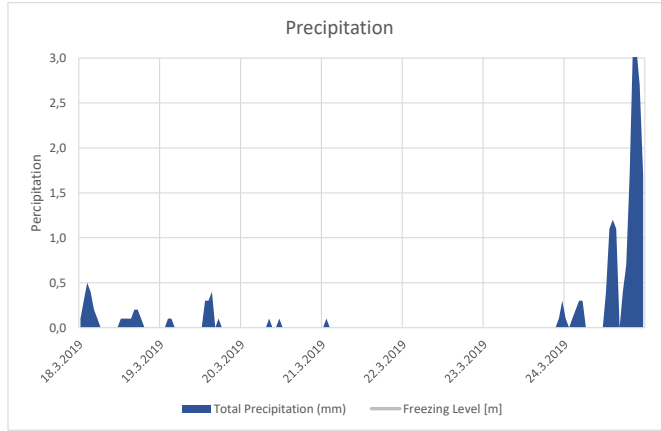
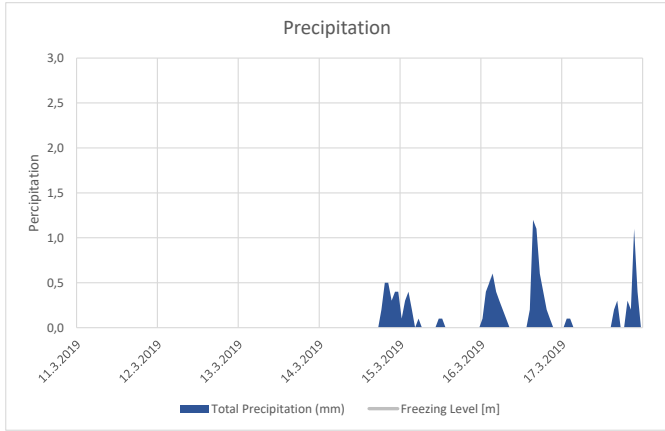


Hermon Berg 2.500 m März

(Quelle: www.meteoblue.com & www.mountain-forecast.com)

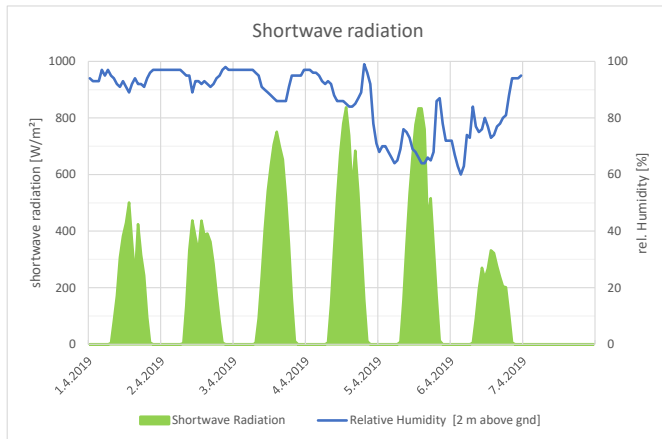
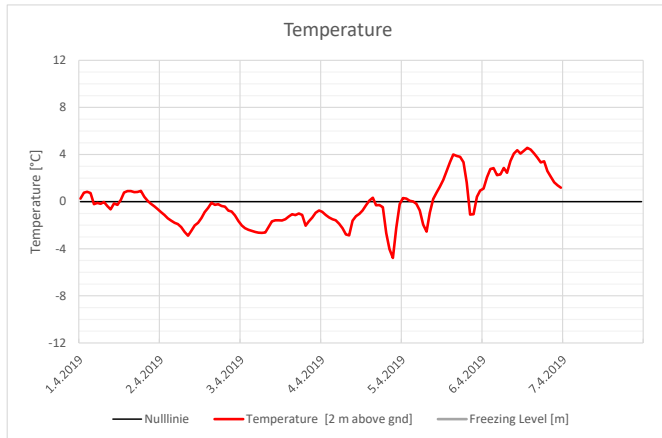






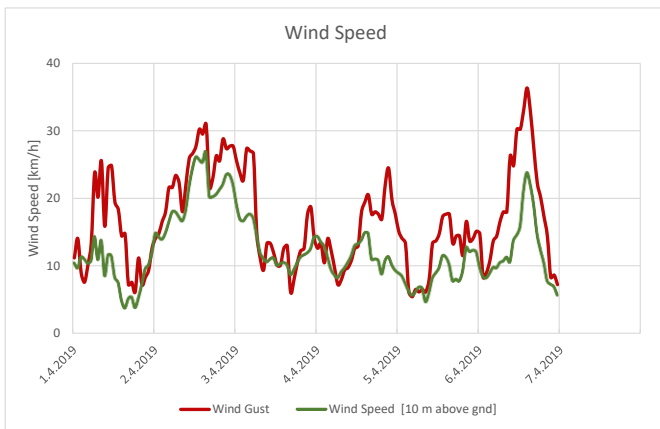
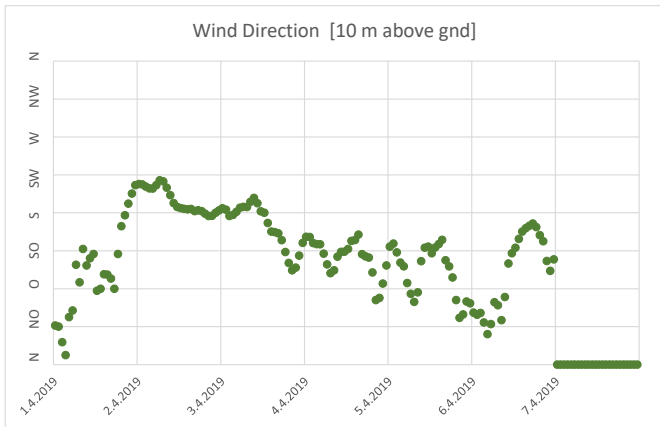
Hermon Berg 2.500 m April

(Quelle: www.meteoblue.com & www.mountain-forecast.com)



Hermon Berg 2.500 m April

(Quelle: www.meteoblue.com & www.mountain-forecast.com)



Hermon Berg 2.500 m April

(Quelle: www.meteoblue.com & www.mountain-forecast.com)

